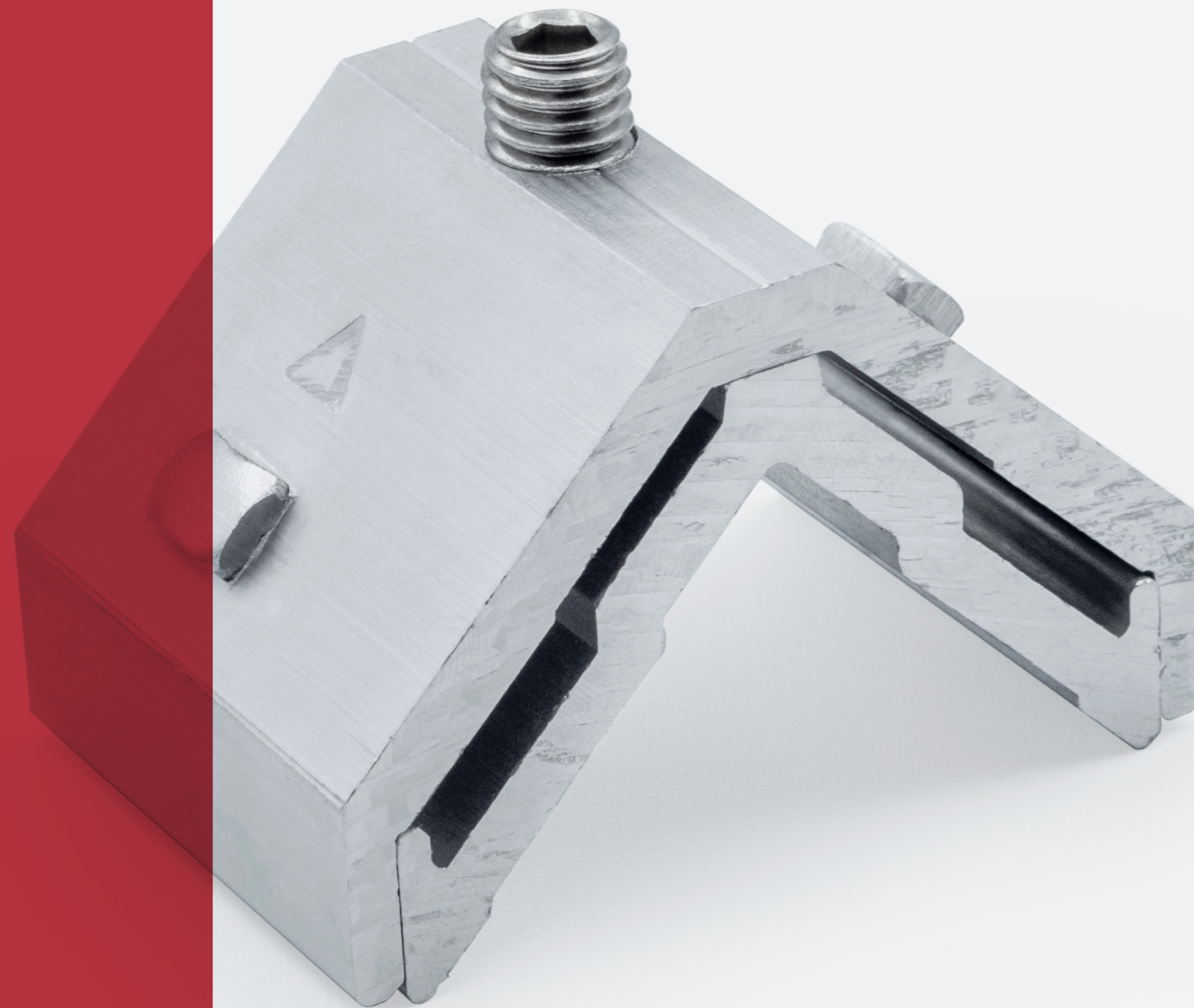


ESCUADRA TETÓN

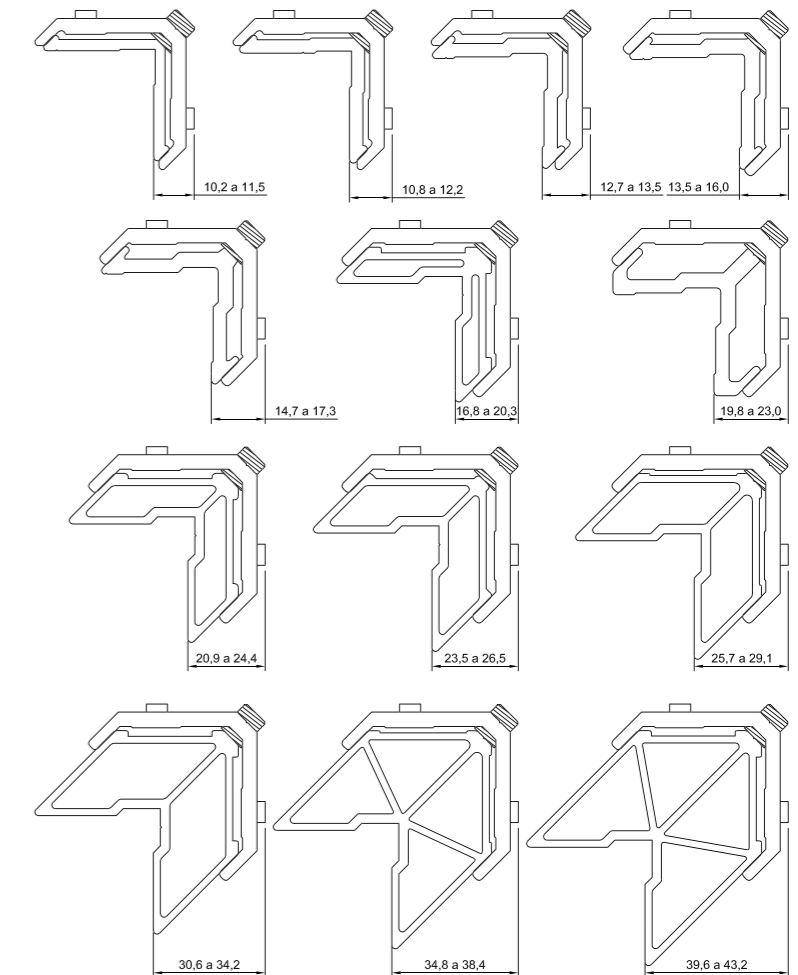
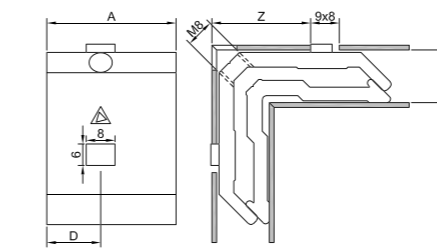
T9 T91



	Artículo	Cota A	Cota C	Cota D	Cota Z	Unidades	Precio
1.	T9 1514C	14.4	14.0	-	27.5	250	1,1666
2.	T9 1614C	15.5	14.0	-	27.5	250	1,1666
3.	T9 1714C	16.7	14.0	-	27.5	300	1,2951
4.	T9 1717C	16.7	17.0	-	27.5	200	1,3539
5.	T9 2014C	19.5	14.0	-	27.5	250	1,2430
6.	T9 2016C	19.5	16.0	-	27.5	250	1,2430
7.	T9 2040C	19.5	40.0	-	27.5	125	1,4002
8.	T9 2214C	21.5	14.0	-	27.5	250	1,2951
9.	T9 2231C	21.5	31.0	-	27.5	150	1,4002
10.	T9 2410C	23.5	11.0	-	27.5	250	1,2368
11.	T9 2514-100	24.2	15.0	10.0	27.5	250	1,3770
12.	T9 2514C	24.2	14.0	-	27.5	250	1,3770
13.	T9 2515-100	24.2	15.0	10.0	27.5	250	1,3770
14.	T9 2516-60	24.0	16.0	6.0	27.5	250	1,3770
15.	T9 2518-100	24.2	18.0	10.0	27.5	250	1,4570
16.	T9 2520-85	24.2	20.0	8.5	27.5	250	1,5167
17.	T9 2522-100	24.2	22.0	10.0	27.5	125	1,5167
18.	T9 2531C	24.2	31.0	-	27.5	125	1,5167
19.	T9 2540-100	24.2	40.0	10.0	27.5	100	1,5753
20.	T9 2540-90	24.2	40.0	9.0	27.5	100	1,5752
21.	T9 2540C	24.5	40.0	-	27.5	100	1,5752
22.	T9 2642-110	25.5	42.0	11.0	27.5	100	1,5915
23.	T9 2714-106	26.0	14.0	10.6	27.5	250	1,4234
24.	T9 2814-80	27.5	14.0	8.0	27.5	250	1,4234
25.	T9 2816-95	27.5	16.0	9.5	27.5	250	1,4486
26.	T9 2816C	27.5	16.0	-	27.5	250	1,4235
27.	T9 2818-85	27.5	18.0	8.5	27.5	200	1,5425
28.	T9 2820-121	27.0	20.0	12.1	27.5	200	1,4967
29.	T9 2820-126	27.0	20.0	12.6	27.5	200	1,4967
30.	T9 2825C	27.5	25.0	-	27.5	125	1,5289
31.	T9 2836C	27.5	36.0	-	27.5	100	1,6219
32.	T9 284238C	27.5/41.6	14.0	-	27.5	70	1,9952
33.	T9 3014C	29.5	14.0	-	27.5	250	1,4586
34.	T9 3031C	29.5	31.0	-	27.5	100	1,6451
35.	T9 3037C	29.5	37.0	-	27.5	100	1,7151
36.	T9 3040-120	29.5	40.0	12.0	27.5	80	1,7151
37.	T9 3116-121	30.0	16.0	12.1	27.5	200	1,5151
38.	T9 3315-110	32.8	15.0	11.0	27.5	200	1,5869
39.	T9 3712C	36.0	12.0	-	27.5	250	1,4820
40.	T9 3714-140	36.0	14.0	14.0	27.5	200	1,5869



	Artículo	Cota A	Cota C	Cota D	Cota Z	Unidades	Precio
41.	T9 3714-150	36.0	14.0	15.0	27.5	200	1,5869
42.	T9 3716-150	36.0	16.0	15.0	27.5	200	1,5869
43.	T9 3716C	36.0	15.0	-	27.5	200	1,5869
44.	T9 3718-150	36.0	18.0	15.0	27.5	150	1,6920
45.	T9 3731-150	36.0	31.0	15.0	27.5	90	1,8434
46.	T9 3731C	36.0	31.0	-	27.5	90	1,8434
47.	T9 3735-155	36.0	35.0	15.5	27.5	80	1,8903
48.	T9 3736-140	36.0	36.0	14.0	27.5	80	1,8903
49.	T9 3736-150	36.0	36.0	15.0	27.5	80	1,8903
50.	T9 3736C	36.0	36.0	-	27.5	80	1,8903
51.	T9 3740-150	36.0	40.0	15.0	27.5	70	2,0076
52.	T9 3742-150	36.0	42.0	15.0	27.5	70	2,0076
53.	T9 3826-150	37.5	26.0	15.0	27.5	100	1,8434
54.	T9 3840-150	37.5	40.0	15.0	27.5	70	2,0302
55.	T9 4140-150	40.5	40.0	15.0	27.7	60	2,0887
56.	T9 4142C	40.5	42.0	-	27.5	60	2,0887
57.	T9 4214-150	41.0	14.0	15.0	27.5	150	1,7384
58.	T9 4220-150	41.0	20.0	15.0	27.5	150	2,0069
59.	T9 4220-180	41.0	20.0	18.0	27.5	150	2,0069
60.	T9 4231-150	41.0	31.0	15.0	27.5	70	1,9952
61.	T9 4416-180	43.5	16.0	18.0	27.5	150	1,8203
62.	T9 4440-180	43.5	16.0	18.0	27.5	60	2,3414
63.	T91 2015C	20.5	15.0	-	25.0	250	1,2430
64.	T91 2028C	20.0	28.0	-	25.0	150	1,4002
65.	T91 2915-110	28.4	15.0	11.0	25.0	250	1,5869
66.	T91 2915-81	28.4	15.0	8.1	25.0	250	1,5869
67.	T91 2936-110	28.4	36.0	11.0	25.0	100	1,7268
68.	T91 3015C	28.5	15.0	-	25.0	250	1,5869
69.	T91 3615-110	35.5	15.0	11.0	25.0	200	1,7948
70.	T91 3615-81	35.5	15.0	8.1	25.0	200	1,7948



+ LA MAYOR ROBUSTEZ PARA LOS PERFILES DONDE SE ALOJA

Escuadra clasificada en la familia de tetones. Está constituida por dos perfiles de alas planas acopladas entre sí una dentro de otra con el mismo ancho, lo que proporciona una gran robustez en los perfiles donde se aloja.

Se sirve con el tetón rectangular de 8x6, dicha medida es significativa, ya que nos facilita no tener que desplazar el tetón en algunas series.

Datos técnicos

TORNILLERÍA
Inoxidable métrica 8

REF. TROQUELES
PA-T9/18

ACCESORIOS
25, 30, 37